



Noise Level dB LAeq(24h)

- 55 - 60
- 60 - 65
- 65 - 70

AUP Zones

- Residential - Single House Zone
- Open Space - Sport and Active Recreation Zone
- Business - Mixed Use Zone
- Future Urban Zone
- Rural - Mixed Rural Zone

Legend

- Building Footprints
- Project Road

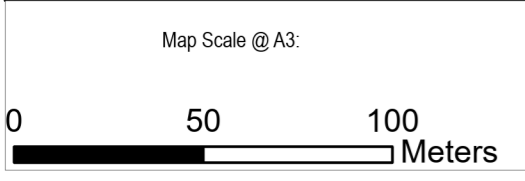
This map contains data derived in part or wholly from sources other than those party to the Supporting Growth Alliance, and therefore, no representations or warranties are made by those party to the Supporting Growth Alliance as to the accuracy or completeness of this information.

Map intended for distribution as a PDF document.
Scale may be incorrect when printed.

Contains information sourced from LINZ. Crown Copyright Reserved.

Unitary plan data sourced from Auckland Council published web services.
Legend information can be viewed on Auckland Council unitary plan viewer.

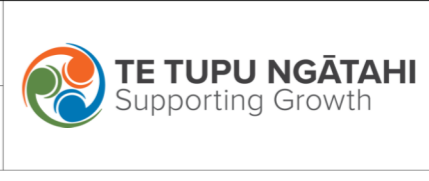
Linework shown on this plan is conceptual only.
Not to be used for construction.



Revision	Author	Verified	Approved	Date
1	DA	SJ	CD	10/02/23

Supporting Growth
 NoR R3 - Mitigated Road Traffic Noise with AUP Zones

Client: **Supporting Growth**
 Project: **North West Package**



Discipline: **GIS**
 Drawing No:

Auckland Council, LINZ, Esri Community Maps Contributors, LINZ, Stats NZ, Esri, HERE, Garmin, Foursquare, METI/NASA, USGS



Noise Level dB $L_{Aeq}(24h)$

- 55 - 60
- 60 - 65
- 65 - 70

- Building Footprints
- Project Road

AUP Zones

- Residential - Single House Zone
- Open Space - Informal Recreation Zone
- Business - Neighbourhood Centre Zone
- Future Urban Zone
- Rural - Mixed Rural Zone
- Special Purpose Zone
- Road

This map contains data derived in part or wholly from sources other than those party to the Supporting Growth Alliance, and therefore, no representations or warranties are made by those party to the Supporting Growth Alliance as to the accuracy or completeness of this information.

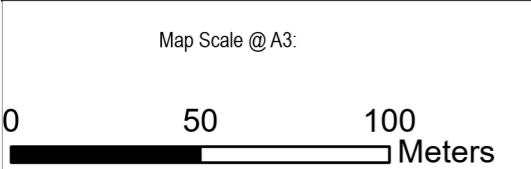
Map intended for distribution as a PDF document.
Scale may be incorrect when printed.

Contains information sourced from LINZ. Crown Copyright Reserved.

Unitary plan data sourced from Auckland Council published web services.
Legend information can be viewed on Auckland Council unitary plan viewer.

Linework shown on this plan is conceptual only.
Not to be used for construction.

Auckland Council, LINZ, Esri Community Maps Contributors, LINZ, Stats NZ, Esri, HERE, Garmin, Foursquare, METI/NASA, USGS



Revision	Author	Verified	Approved	Date
1	DA	SJ	CD	10/02/23

Supporting Growth
NoR R3 - Mitigated Road Traffic Noise with AUP Zones

Client: **Supporting Growth**

Project: **North West Package**



Discipline: **GIS**

Drawing No:



Noise Level dB $L_{Aeq}(24h)$

- 55 - 60
- 60 - 65
- 65 - 70

- Building Footprints
- Project Road

AUP Zones

- Future Urban Zone
- Rural - Mixed Rural Zone
- Special Purpose Zone Road

This map contains data derived in part or wholly from sources other than those party to the Supporting Growth Alliance, and therefore, no representations or warranties are made by those party to the Supporting Growth Alliance as to the accuracy or completeness of this information.

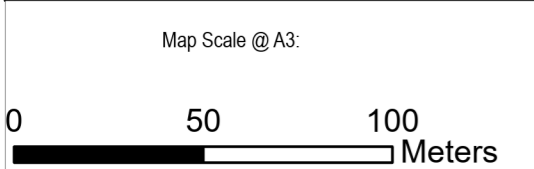
Map intended for distribution as a PDF document.
Scale may be incorrect when printed.

Contains information sourced from LINZ. Crown Copyright Reserved.

Unitary plan data sourced from Auckland Council published web services.
Legend information can be viewed on Auckland Council unitary plan viewer.

Linework shown on this plan is conceptual only.
Not to be used for construction.

Auckland Council, LINZ, Esri Community Maps Contributors, LINZ, Stats NZ, Esri, HERE, Garmin, Foursquare, METI/NASA, USGS



Revision	Author	Verified	Approved	Date
1	DA	SJ	CD	10/02/23

Supporting Growth
NoR R3 - Mitigated Road Traffic Noise with AUP Zones

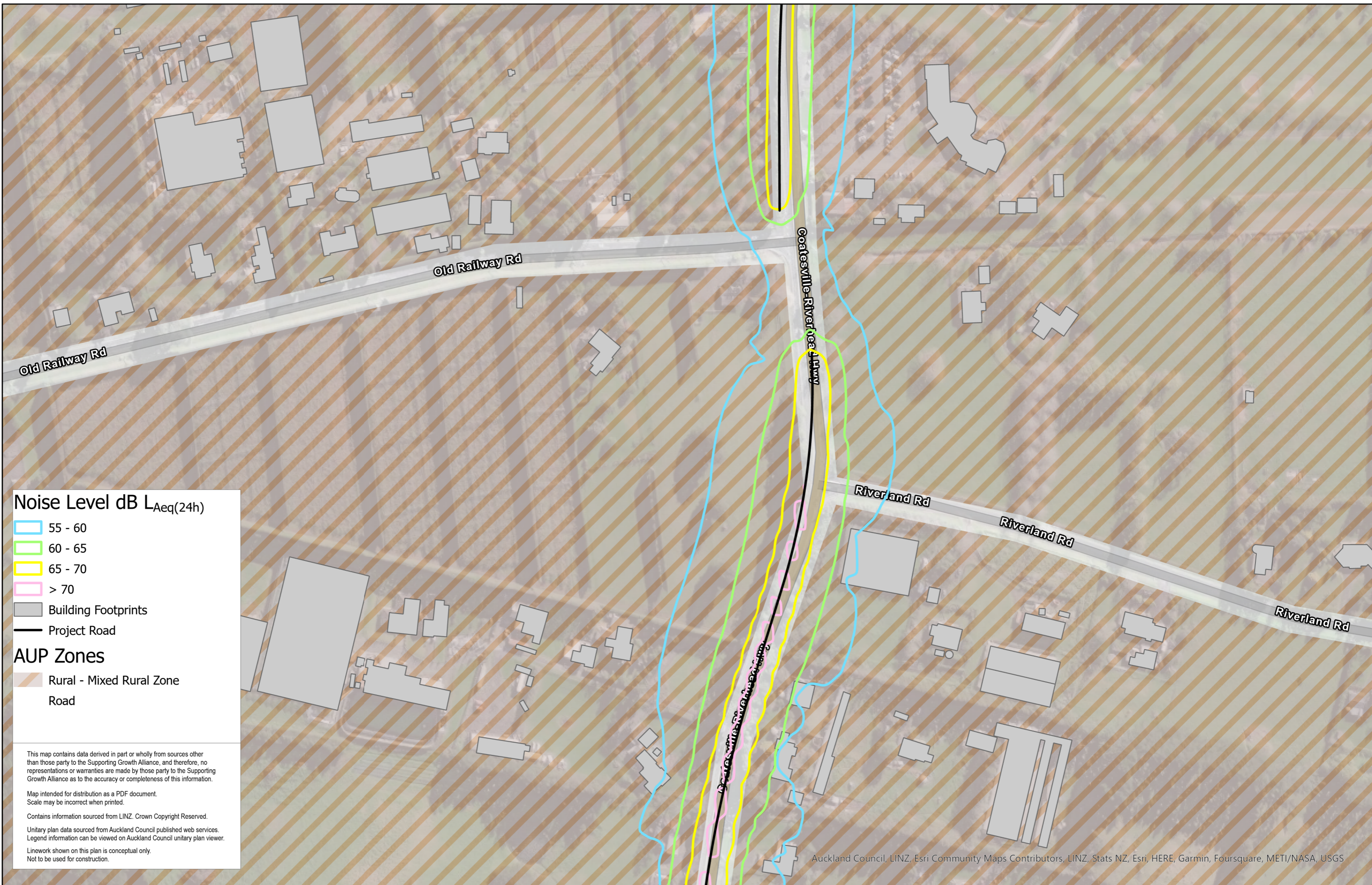
Client: **Supporting Growth**

Project: **North West Package**



Discipline: **GIS**

Drawing No:



Noise Level dB L_{Aeq}(24h)

- 55 - 60
- 60 - 65
- 65 - 70
- > 70

- Building Footprints
- Project Road

AUP Zones

- Rural - Mixed Rural Zone Road

This map contains data derived in part or wholly from sources other than those party to the Supporting Growth Alliance, and therefore, no representations or warranties are made by those party to the Supporting Growth Alliance as to the accuracy or completeness of this information.

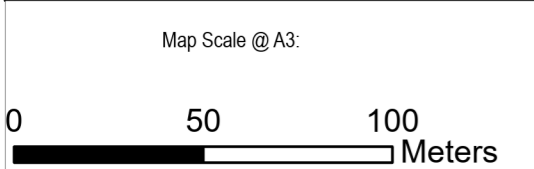
Map intended for distribution as a PDF document.
Scale may be incorrect when printed.

Contains information sourced from LINZ. Crown Copyright Reserved.

Unitary plan data sourced from Auckland Council published web services.
Legend information can be viewed on Auckland Council unitary plan viewer.

Linework shown on this plan is conceptual only.
Not to be used for construction.

Auckland Council, LINZ, Esri Community Maps Contributors, LINZ, Stats NZ, Esri, HERE, Garmin, Foursquare, METI/NASA, USGS



Revision	Author	Verified	Approved	Date
1	DA	SJ	CD	10/02/23

Supporting Growth
NoR R3 - Mitigated Road Traffic Noise with AUP Zones

Client: **Supporting Growth**

Project: **North West Package**

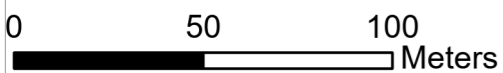


Discipline: **GIS**

Drawing No:



Map Scale @ A3:



Revision	Author	Verified	Approved	Date	Title:
1	DA	SJ	CD	10/02/23	Supporting Growth NoR R3 - Mitigated Road Traffic Noise with AUP Zones

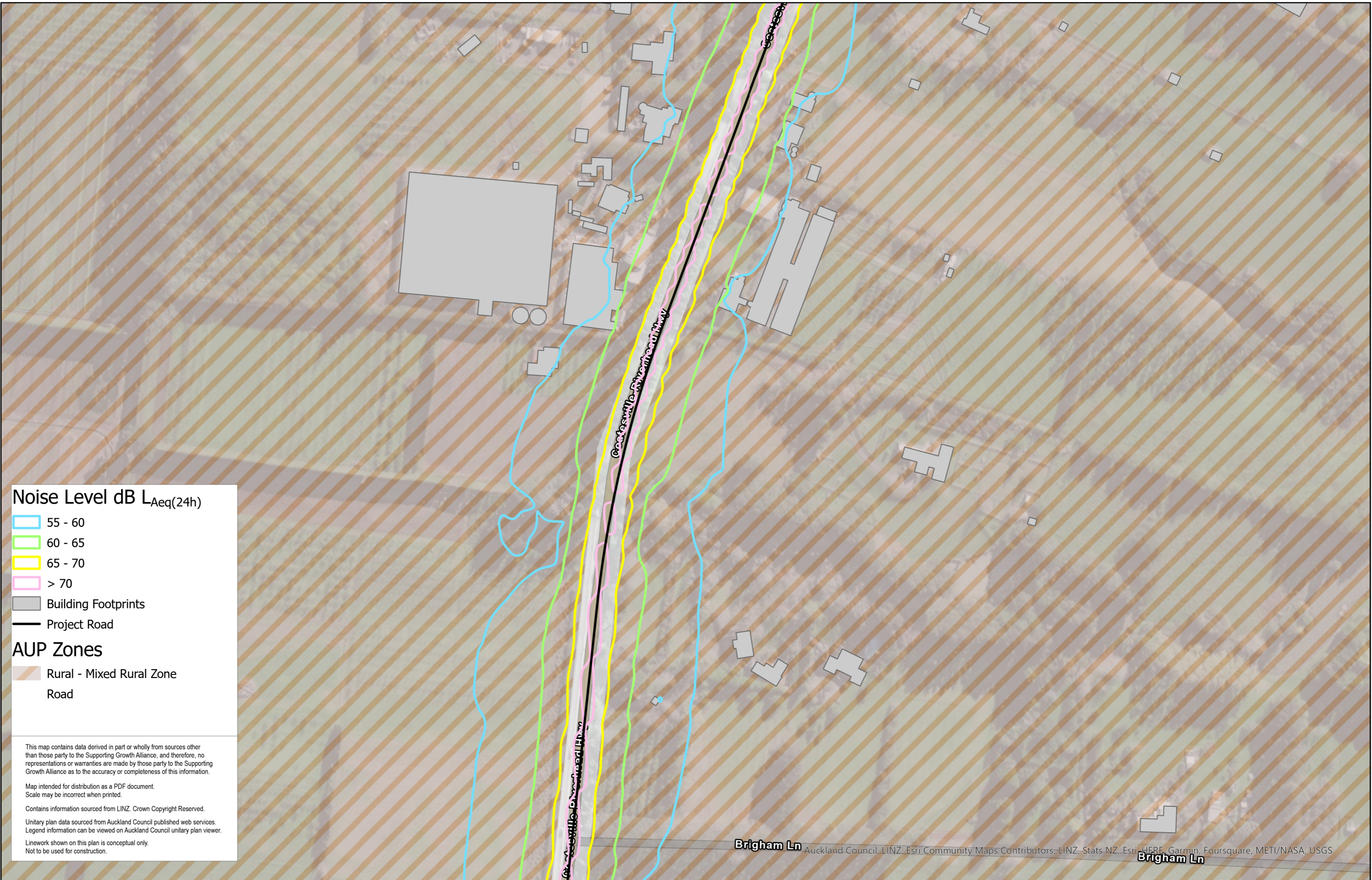
Client: **Supporting Growth**

Project: **North West Package**



Discipline: **GIS**

Drawing No:



Noise Level dB $L_{Aeq}(24h)$

- 55 - 60
- 60 - 65
- 65 - 70
- > 70

- Building Footprints
- Project Road

AUP Zones

- Rural - Mixed Rural Zone
Road

This map contains data derived in part or wholly from sources other than those party to the Supporting Growth Alliance, and therefore, no representations or warranties are made by those party to the Supporting Growth Alliance as to the accuracy or completeness of this information.

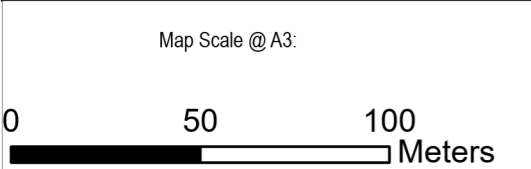
Map intended for distribution as a PDF document.
Scale may be incorrect when printed.

Contains information sourced from LINZ. Crown Copyright Reserved.

Unitary plan data sourced from Auckland Council published web services.
Legend information can be viewed on Auckland Council unitary plan viewer.

Linework shown on this plan is conceptual only.
Not to be used for construction.

Brigham Ln
Brigham Ln
Auckland Council, LINZ, Esri Community Maps Contributors, LINZ, Stats NZ, Esri, HERE, Garmin, Foursquare, METI/NASA, USGS



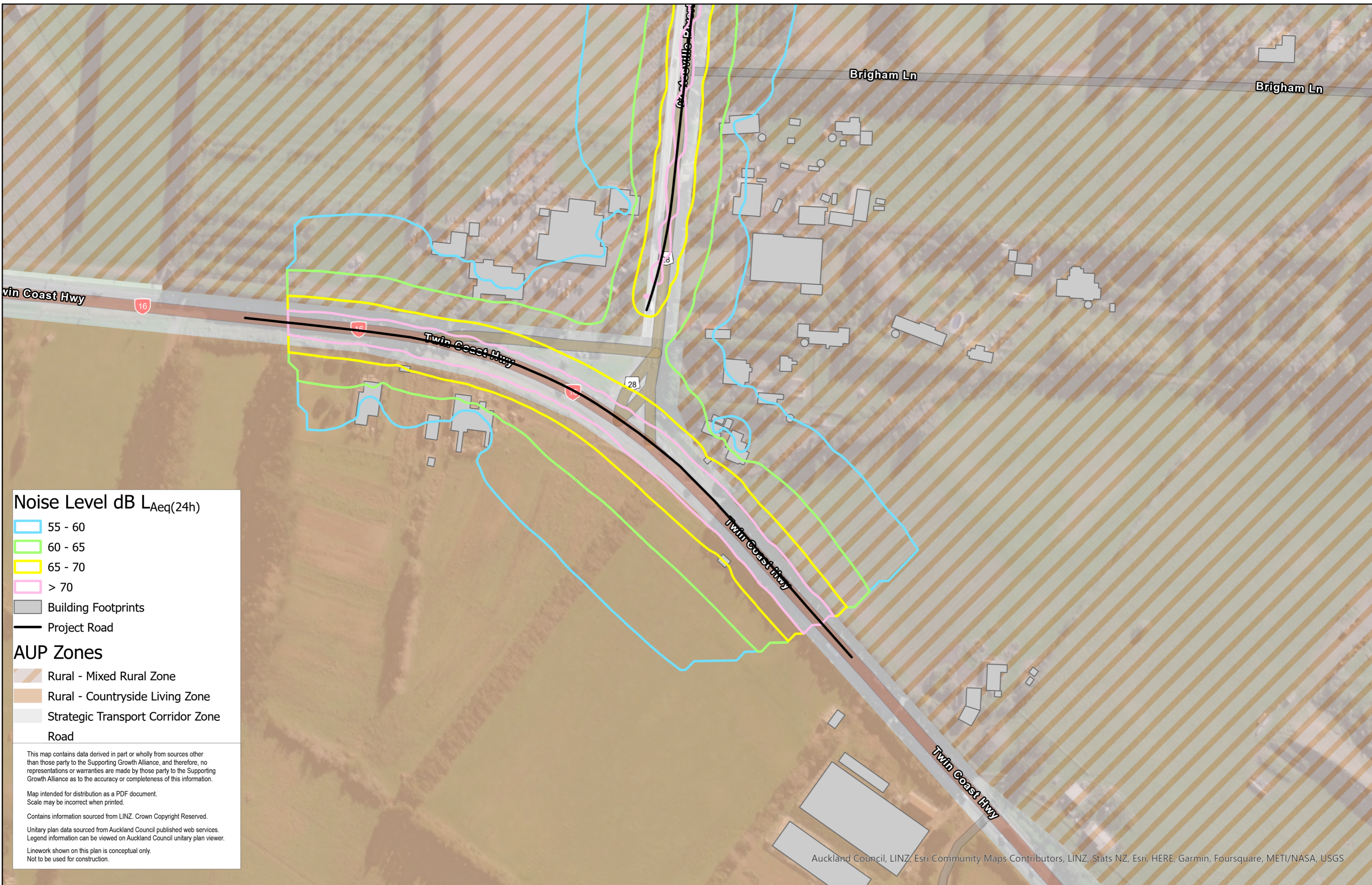
Revision	Author	Verified	Approved	Date
1	DA	SJ	CD	10/02/23

Supporting Growth
NoR R3 - Mitigated Road Traffic Noise with AUP Zones

Client: **Supporting Growth**
Project: **North West Package**



Discipline: **GIS**
Drawing No:



Noise Level dB $L_{Aeq}(24h)$

- 55 - 60
- 60 - 65
- 65 - 70
- > 70

- Building Footprints
- Project Road

AUP Zones

- Rural - Mixed Rural Zone
- Rural - Countryside Living Zone
- Strategic Transport Corridor Zone

This map contains data derived in part or wholly from sources other than those party to the Supporting Growth Alliance, and therefore, no representations or warranties are made by those party to the Supporting Growth Alliance as to the accuracy or completeness of this information.

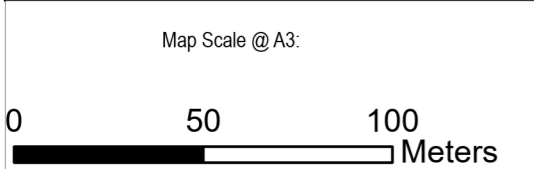
Map intended for distribution as a PDF document.
Scale may be incorrect when printed.

Contains information sourced from LINZ. Crown Copyright Reserved.

Unitary plan data sourced from Auckland Council published web services.
Legend information can be viewed on Auckland Council unitary plan viewer.

Linework shown on this plan is conceptual only.
Not to be used for construction.

Auckland Council, LINZ, Esri Community Maps Contributors, LINZ, Stats NZ, Esri, HERE, Garmin, Foursquare, METI/NASA, USGS



Revision	Author	Verified	Approved	Date
1	DA	SJ	CD	10/02/23

Supporting Growth
 NoR R3 - Mitigated Road Traffic Noise with AUP Zones

Client: **Supporting Growth**
 Project: **North West Package**



Discipline: **GIS**
 Drawing No: